



Discover the countryside of Aire on foot.

Aire is situated between the « mountains » of Flanders and the hills of Artois in the heart of the Nord - Pas-de-Calais region. Aire is roughly 60 km from Lille, Arras; and Calais. The territory of the communes of Aire extends for about 15 km from Racquinghem in the north to Aire-sur-la-Lys in the south and passes by the villages of Quiestède, Roquetoire, and Wittes.

This area, mostly rural, is shaped by its position between two geographical areas, the plain of the river Lys and the foothills of the Artois. This position makes it a rich and diverse countryside. The plain of the Lys is open farmland with well-dispersed urban areas. It is strongly characterised by water : its marshes, rivers, dykes, and canals which embellish the countryside.

Aire-sur-la-Lys, the principal town, is itself watered by numerous streams which from the framework of its astonishing urban landscape. It is also well-known for its long and ancient history.



The community of communes of Aire have combined to promote tourism. They do so through the footpaths presented on the other side of this leaflet, suitable for all the family. You will discover its heritage, natural and architectural, and combine its appreciation with the pleasure of walking.

Refreshment and accommodation

is available in Aire-sur-la-Lys, Quiestède, Wittes, Roquetoire or Racquinghem.

Two town circuits introduce you to the heritage of Aire-sur-la-Lys

- follow the « open books », a series of illustrated pages set in key places with descriptions in English (1 hour 30 minutes)

- « Step by step » (2 hours)

Group visits can be arranged to : the town watchtower, the collegial church, chapel of Saint-Jacques, water cross beds, etc.

Information

Tourist Office**

Le Bailliage, Grand'Place - 62 921 Aire-sur-la-Lys
Tél./Fax 03 21 39 65 66
www.ot-airesurlalys.fr

In the community of communes of Aire

Hôtel de Ville - BP 29 - 62 921 Aire-sur-la-Lys Cedex
Tél. 03 21 95 40 59 - Fax 03 21 39 26 74
www.paysdaire.fr

To download the leaflet for each walk go to

www.ot-airesurlalys.fr

or collect from the Tourist Office or the
Mairie of the relevant commune.



© atelierphotographique 03 21 12 10 00. 01-11.

Guided Walks in the community of communes of Aire

Sign-posted footpaths



9 footpaths are
to be followed :
- the full circuit
around Aire 40 km
- 8 short walks
between
7 à 13,5 km

Access : D 943



Waymarks

GRP ®
Nationally
recognised walks

PR ®
Shorter,
local walks

keep straight on



GRP ®
Nationally
recognised walks

PR ®
Shorter,
local walks

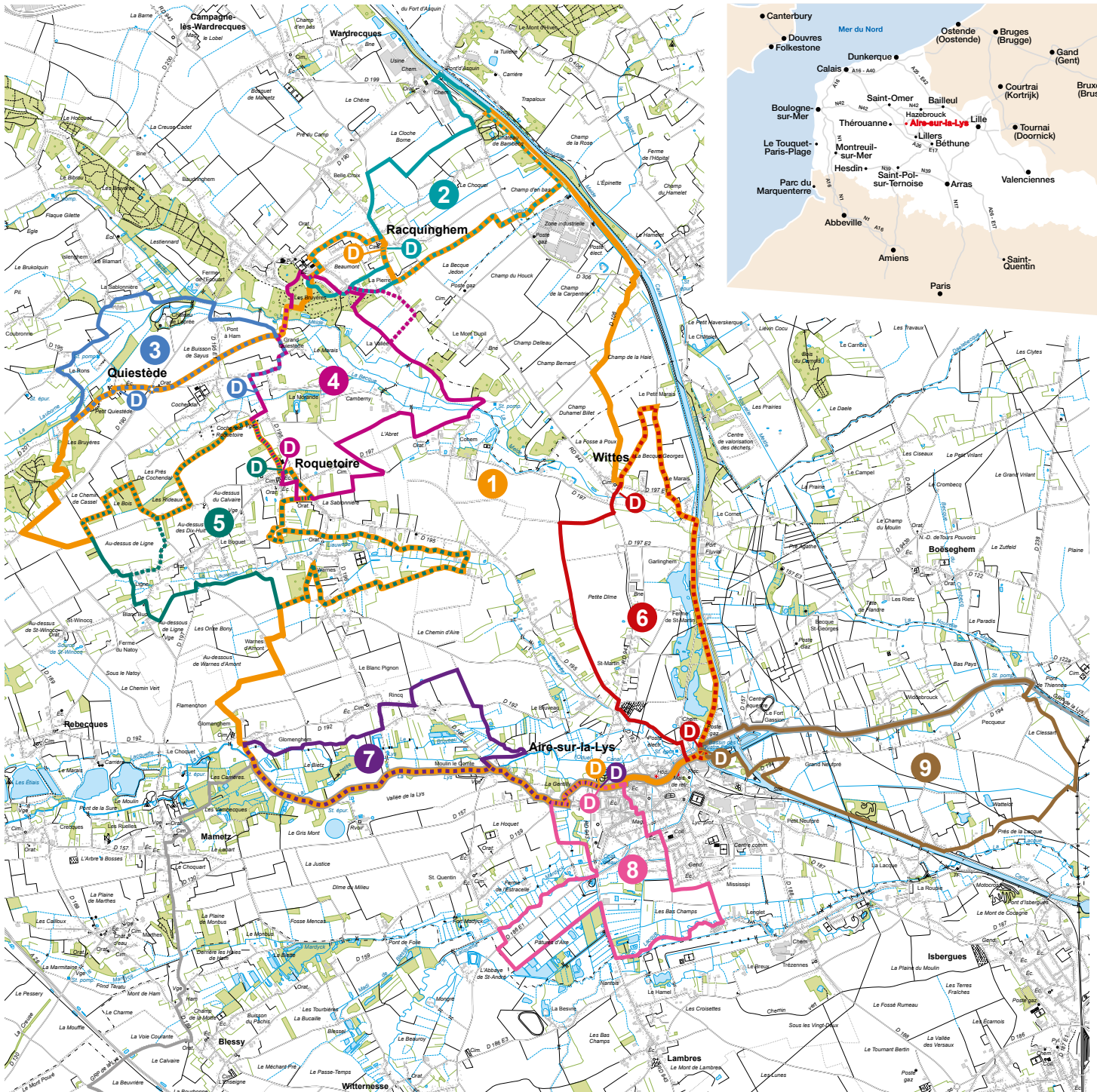
change direction



GRP ®
Nationally
recognised walks

PR ®
Shorter,
local walks

marked footpaths



Marked footpaths

1 Circuit around the whole community of communes
40 km - 2 days

D Start at AREA cinema Aire-sur-la-Lys, or parking at village hall, Racquinghem
Access D 943

2 Hugo
10 km - 3 hours

D Start at parking Racquinghem village hall
Access D 943

3 Laprée
7 km - 2 hours 15 mins

D Start Quiestède church or parking D 195
Access D 190

4 La Vallée
10 km - 3 hours

D Roquetaire « mairie » (village administrative centre)
Access D 195

5 Les Héringaux
13,5 km - 4 hours 30 mins

D Roquetaire « mairie »
Access D 195

6 La Melde
9 km - 3 hours

D Parking salle Louis Vicar, Wittes or canal basin des 4 faces Aire-sur-la-Lys
Access D 943

7 Le Bruveau
10 km - 3 hours

D AREA cinema, public garden Aire-sur-la-Lys
Access D 943

8 Le Marais
9 km - 3 hours

D AREA cinema, public garden Aire-sur-la-Lys
Access D 943

9 Between the river Lys and the grand canal
12 km - 4 hours

D Canal basin des 4 faces Aire-sur-la-Lys
Access D 157

Walkers' code :

1 - Keep to the paths and marked walks.
2 - Keep dogs on the leash.

3 - Respect crops, farm animals, and machinery.
4 - Be polite to other users of the paths and countryside.

5 - Do not drop litter, take it home with you.
6 - Do not light fires.
7 - Study animals and plants without touching them.
8 - Be quiet and discreet.

9 - Respect signposts and other markers.
10 - Inform the Office of Tourism of any unexpected obstacles, errors in the marking of footpaths, etc. as soon as possible.